



# ESRE



Fi فَا

Kı قَا

Ki كَا

Li لَا

Mi مَا

Ni نَا

Vi وَا

Hi هَا

Yi يَا

Zi زَا

Si سَا

Şi Şَا

Sı صَا

Di دَا

Ti طَا

Zı ظَا

I عَا

Ğı غَا

İ اءَا

Bi بَا

Ti تَا

Si سَا

Ci جَا


Hi حَا

Hi حَا

Di دَا

Zi زَا

Rı رَا

Esre (  ) ince harflerin altına gelirse "i" ; kalın harflerin altına gelirse "ı" sesiyle okunur.

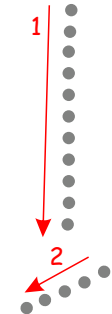
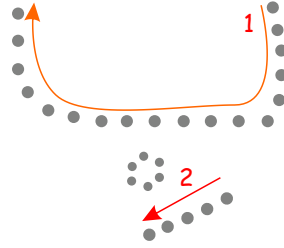
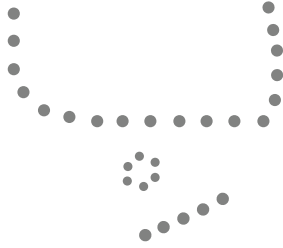


Esreli harfleri oku ve boya.

ا ب



Çizgileri birleştirerek esreli harfleri tamamla.

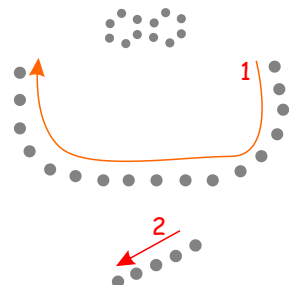
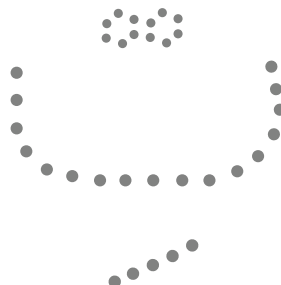
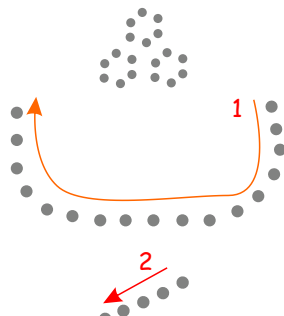
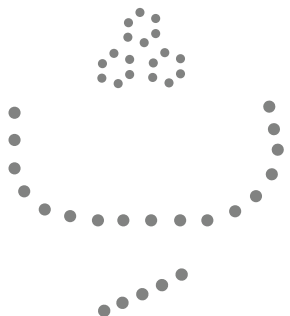


Esreli harfleri oku ve boya.

ت ث



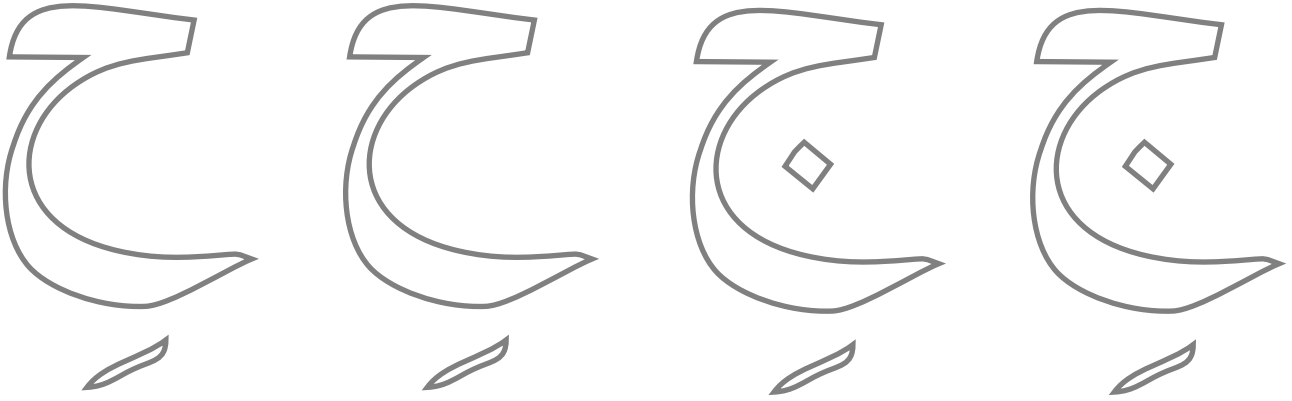
Çizgileri birleştirerek esreli harfleri tamamla.



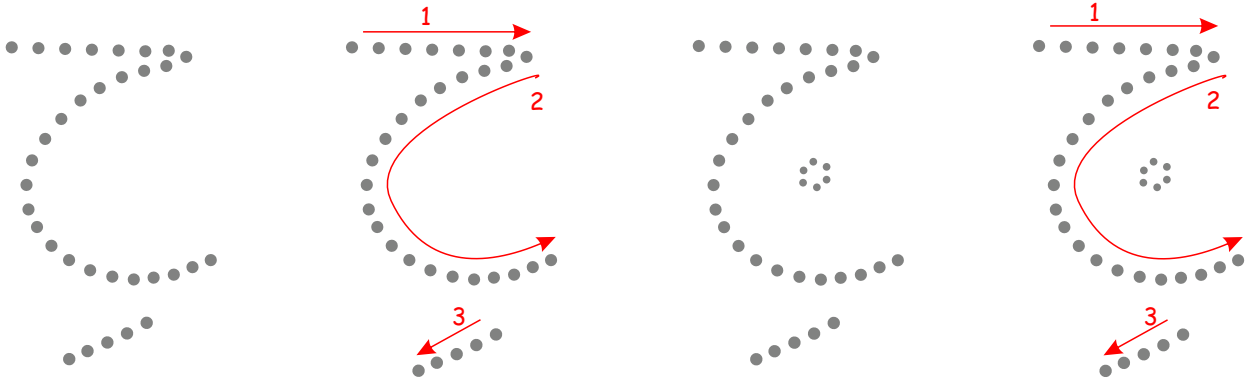


Esreli harfleri oku ve boya.

ح ح

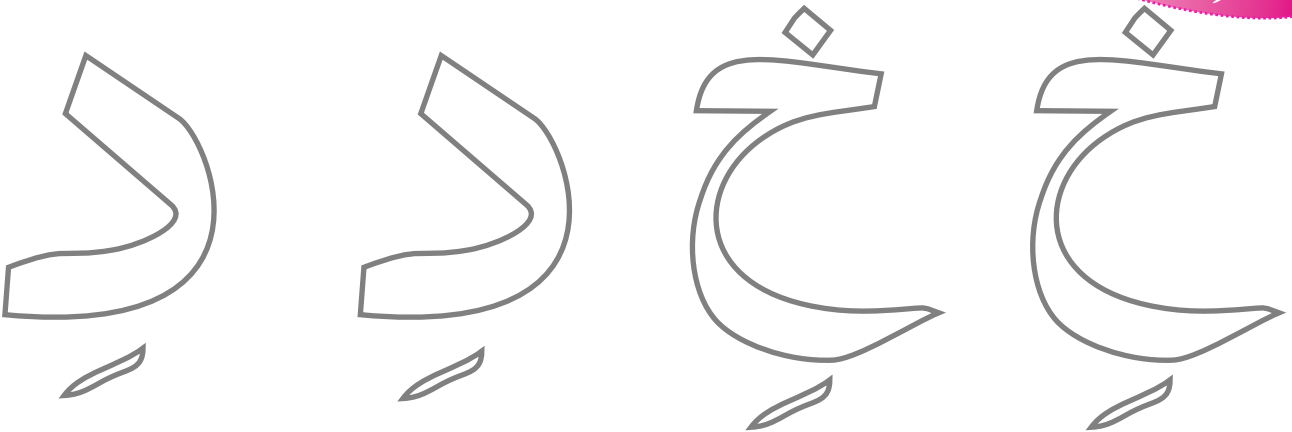


Çizgileri birleştirerek esreli harfleri tamamla.

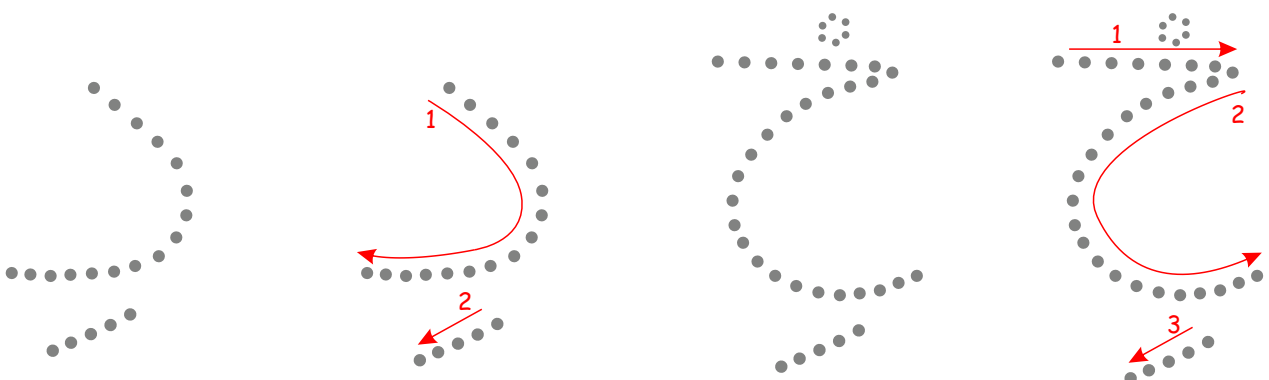


Esreli harfleri oku ve boya.

خ خ



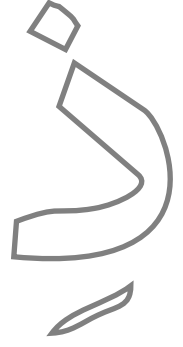
Çizgileri birleştirerek esreli harfleri tamamla.



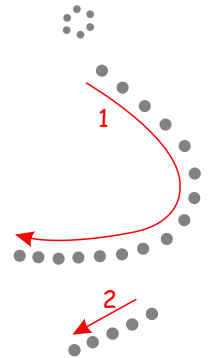
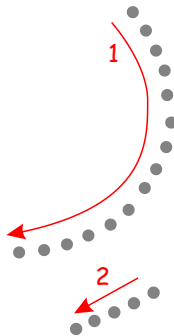
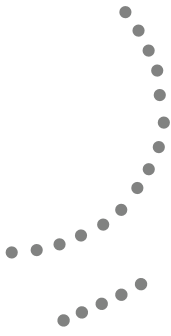


Esreli harfleri oku ve boya.

ذِر

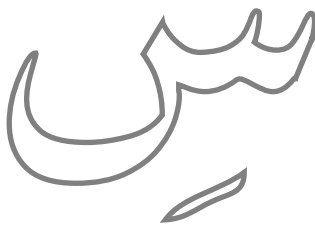
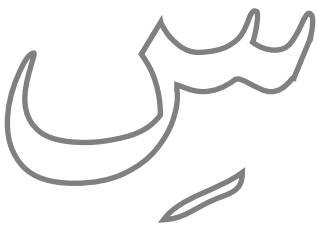


Çizgileri birleştirerek esreli harfleri tamamla.

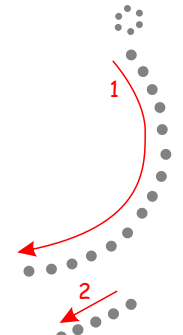
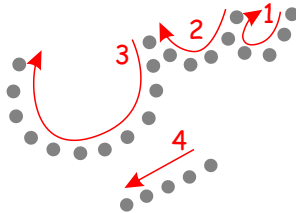
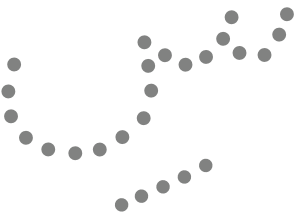


Esreli harfleri oku ve boya.

زِس

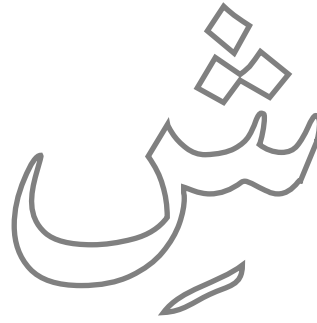
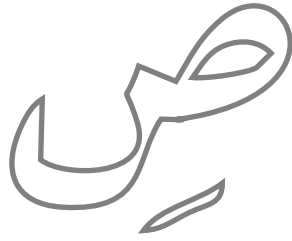
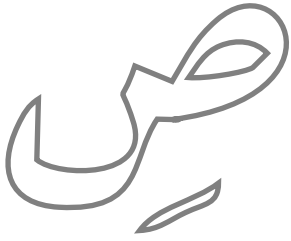


Çizgileri birleştirerek esreli harfleri tamamla.

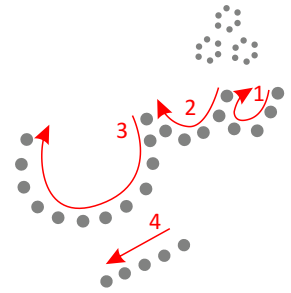
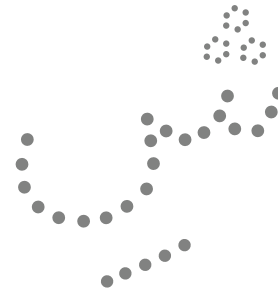
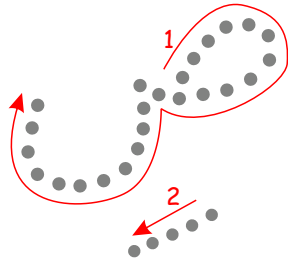
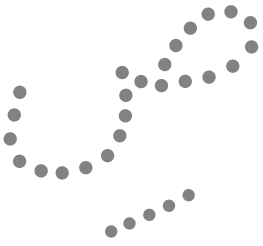




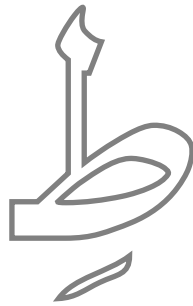
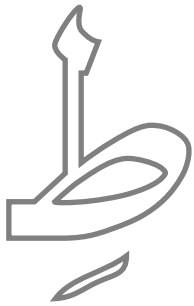
Esreli harfleri oku ve boya.



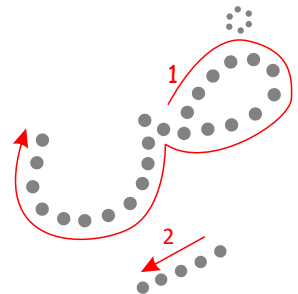
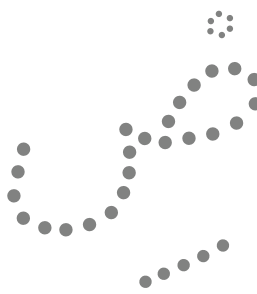
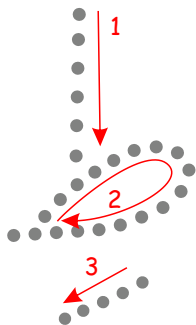
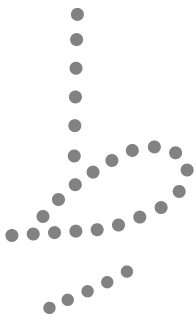
Çizgileri birleştirerek esreli harfleri tamamla.



Esreli harfleri oku ve boya.

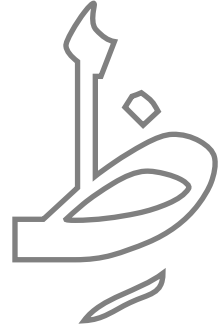
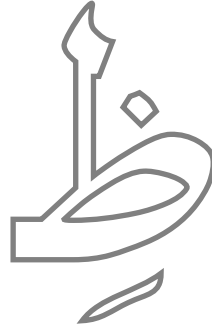
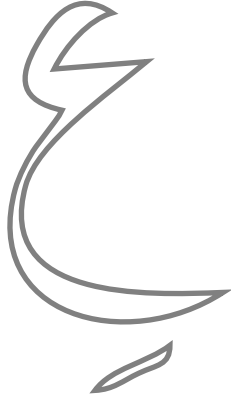
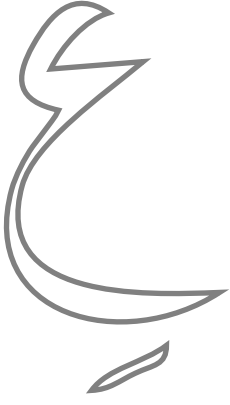


Çizgileri birleştirerek esreli harfleri tamamla.

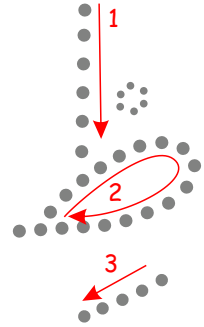
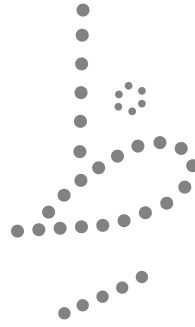
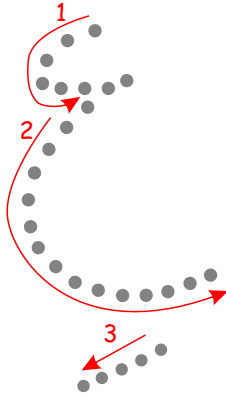
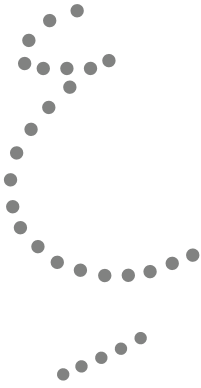




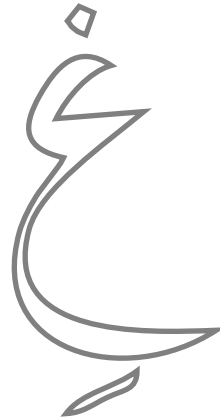
Esreli harfleri oku ve boya.



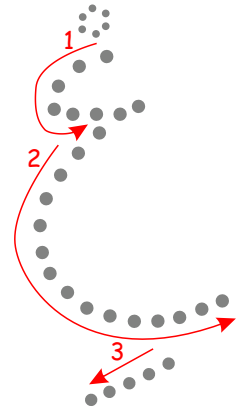
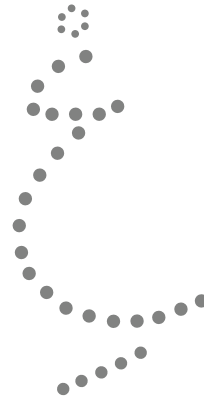
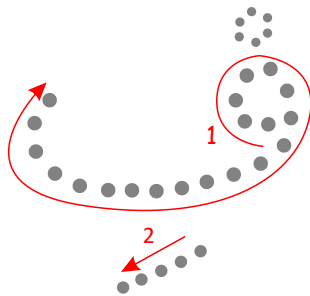
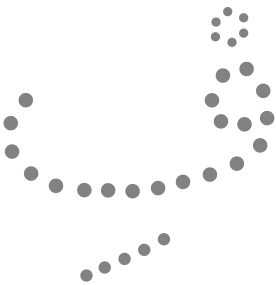
Çizgileri birleřtirerek esreli harfleri tamamla.



Esreli harfleri oku ve boya.



Çizgileri birleřtirerek esreli harfleri tamamla.

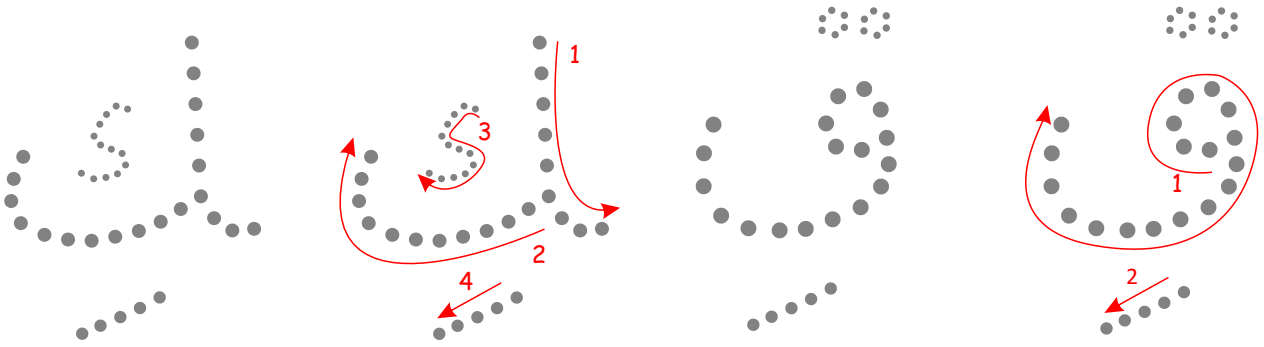




Esreli harfleri oku ve boya.



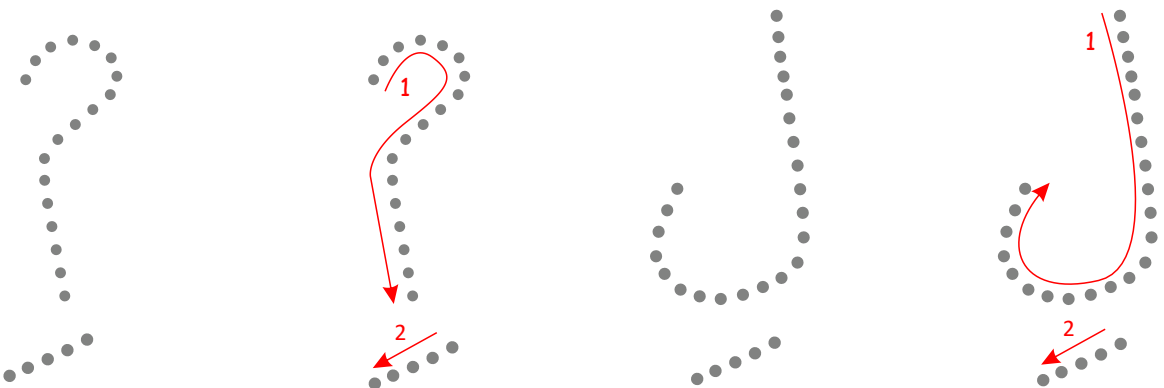
Çizgileri birleştirerek esreli harfleri tamamla.



Esreli harfleri oku ve boya.



Çizgileri birleştirerek esreli harfleri tamamla.

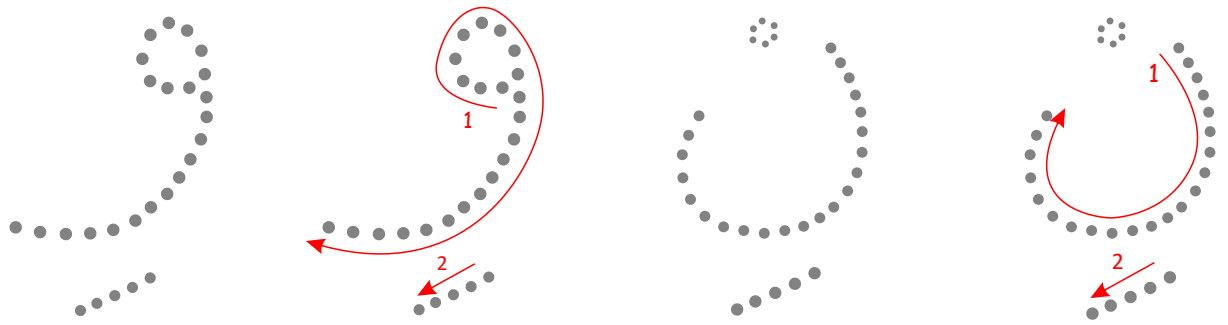




Esreli harfleri oku ve boya.



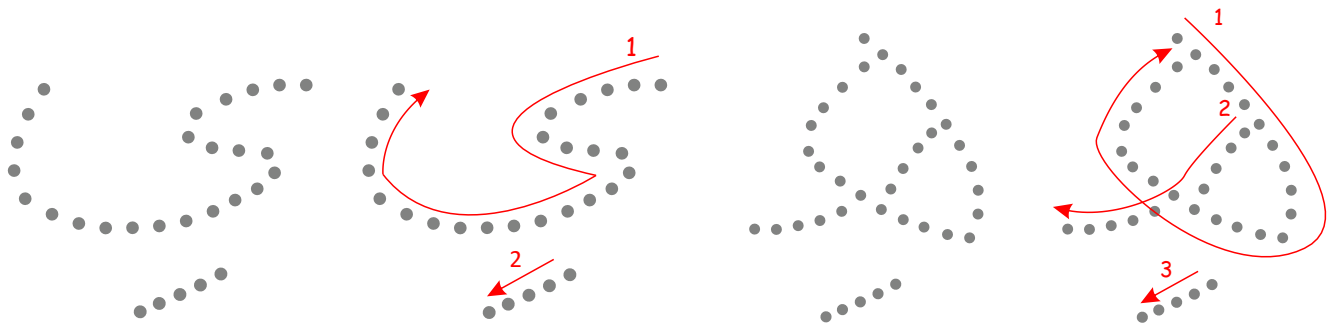
Çizgileri birleştirerek esreli harfleri tamamla.



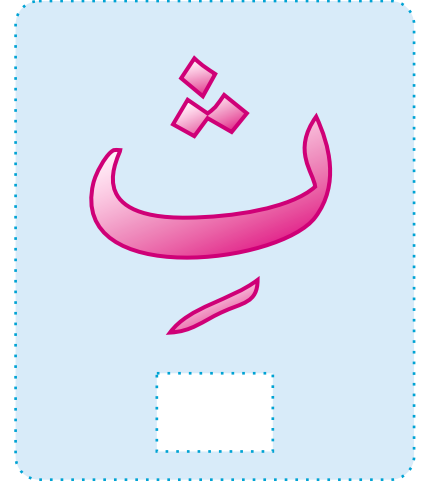
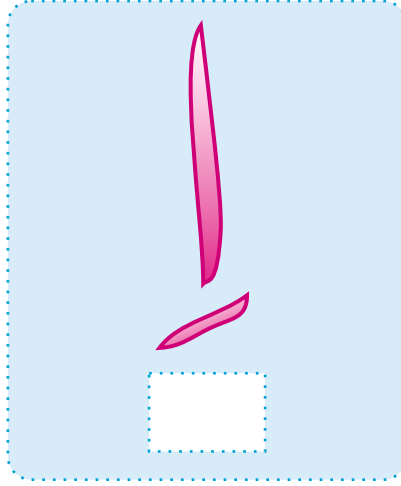
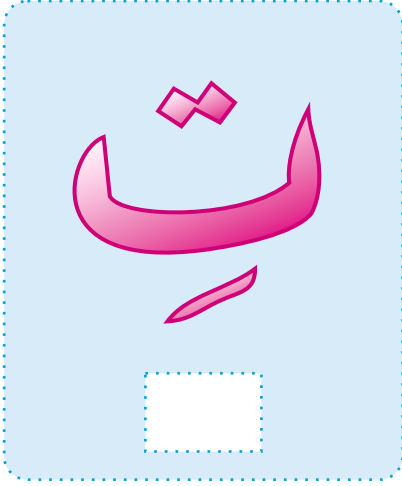
Esreli harfleri oku ve boya.



Çizgileri birleştirerek esreli harfleri tamamla.

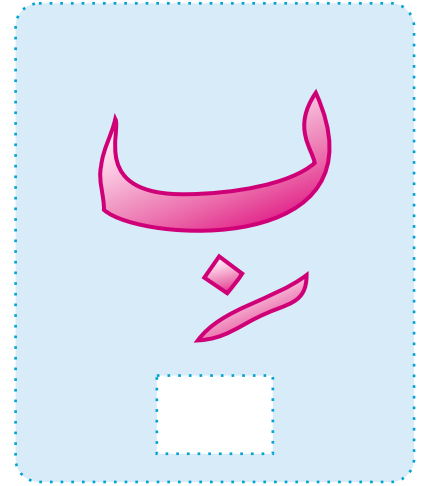
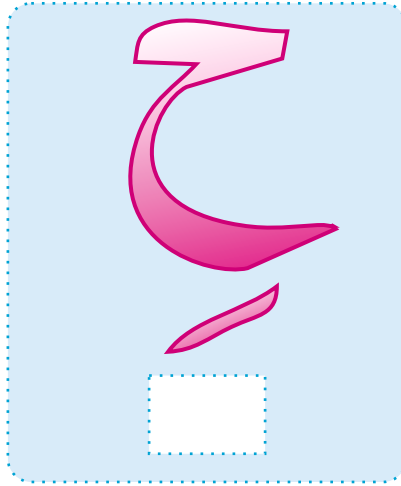
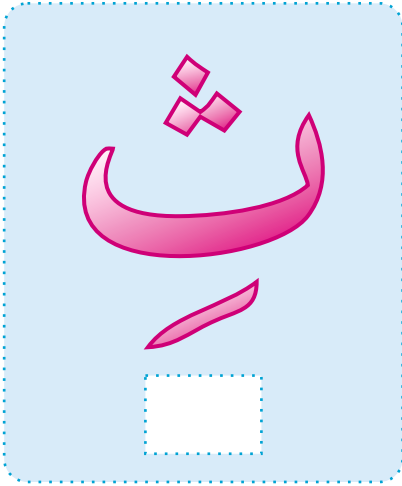


"Tİ" sesiyle okunan esreli harfin altındaki kutucuğu (X) işareti ile işaretleyin.



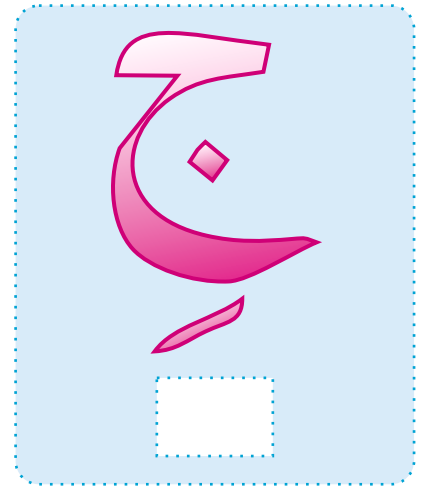
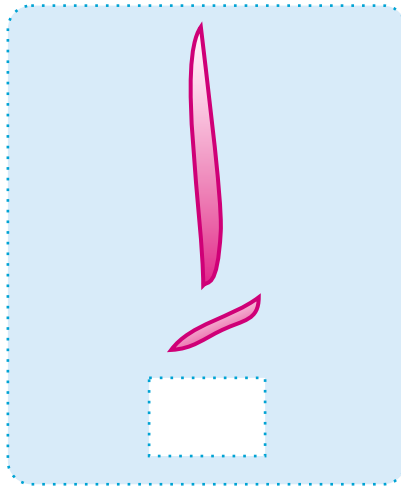
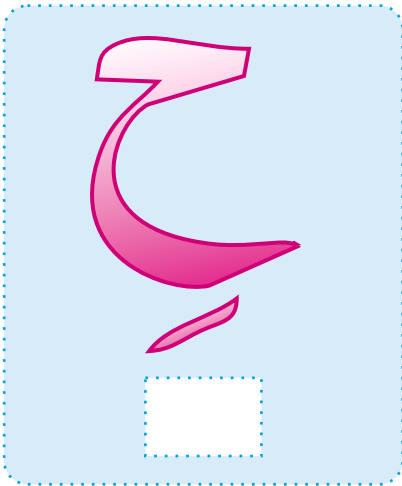
İşaretleme yaptıktan sonra esreli olan üç harfi de okumasını isteyin

"SI" sesiyle okunan esreli harfin altındaki kutucuğu (X) işareti ile işaretleyin.



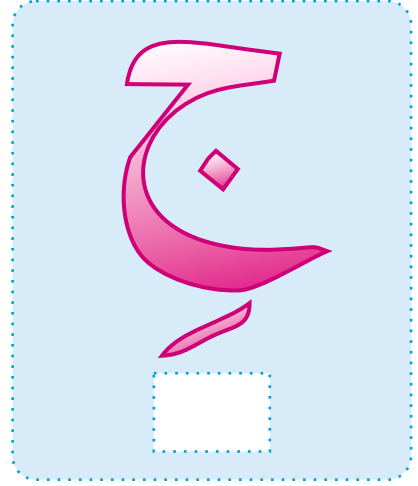
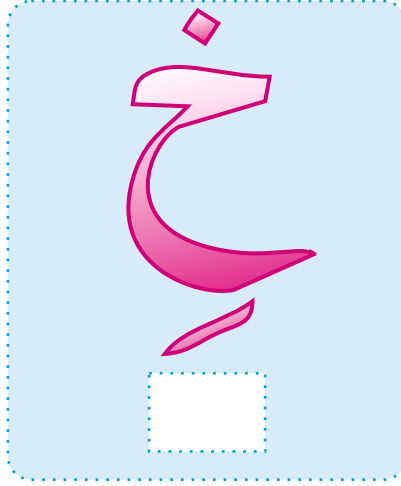
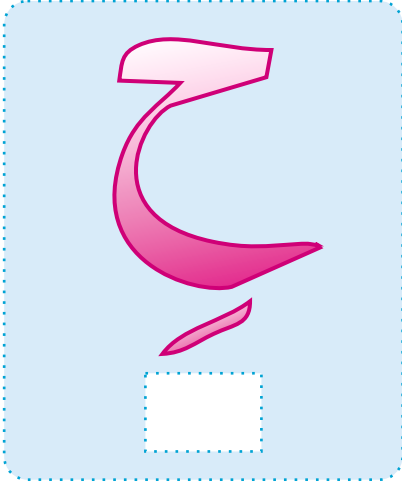
İşaretleme yaptıktan sonra esreli olan üç harfi de okumasını isteyin

"HI" sesiyle okunan esreli harfin altındaki kutucuğu (X) işareti ile işaretleyin.



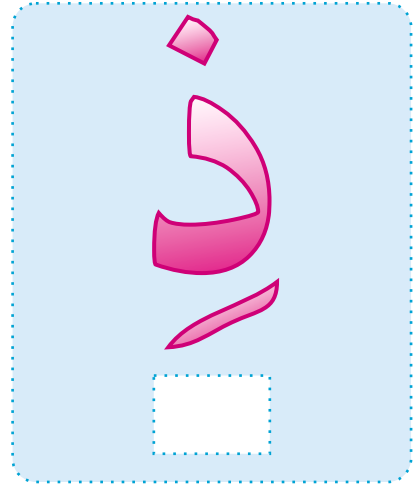
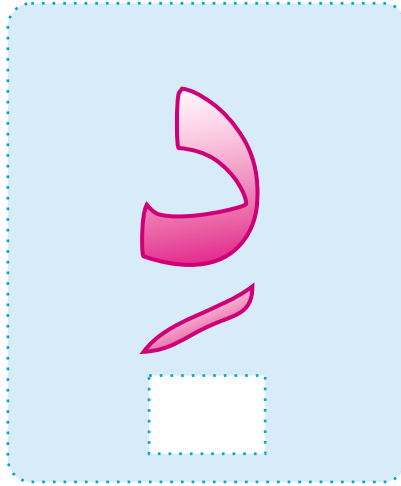
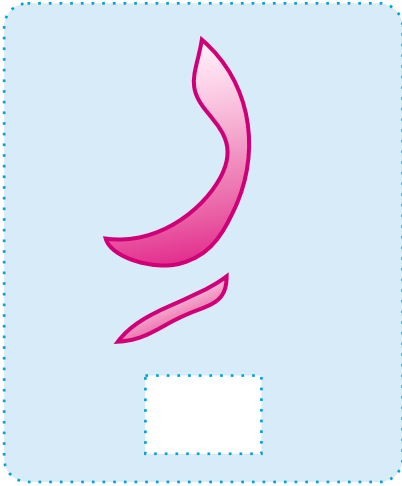
İşaretleme yaptıktan sonra esreli olan üç harfi de okumasını isteyin

"Cİ" sesiyle okunan esreli harfin altındaki kutucuğu (X) işareti ile işaretleyin.



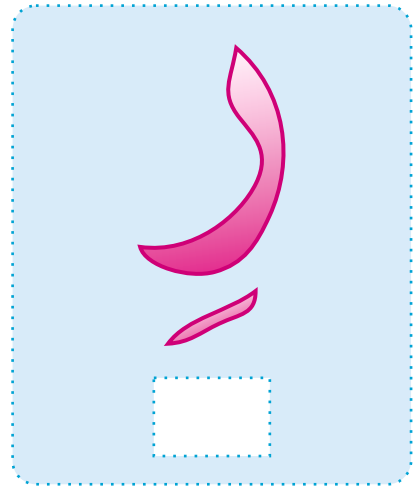
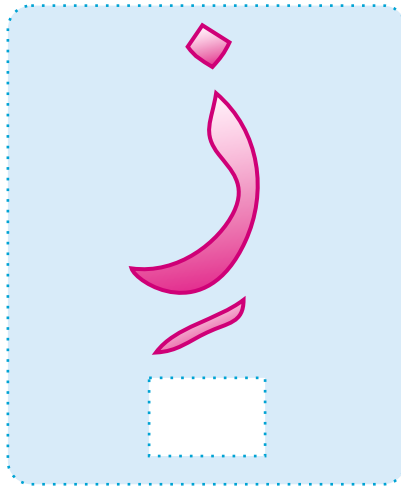
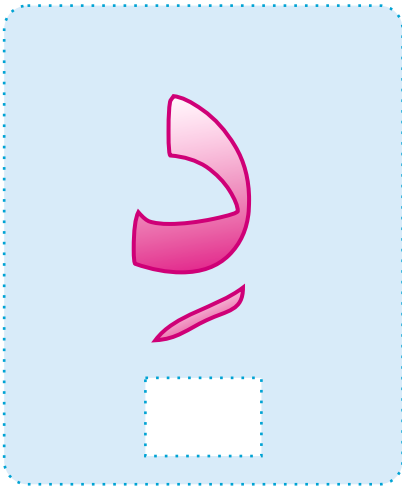
İşaretleme yaptıktan sonra esreli olan üç harfi de okumasını isteyin

"Zİ" sesiyle okunan esreli harfin altındaki kutucuğu (X) işareti ile işaretleyin.



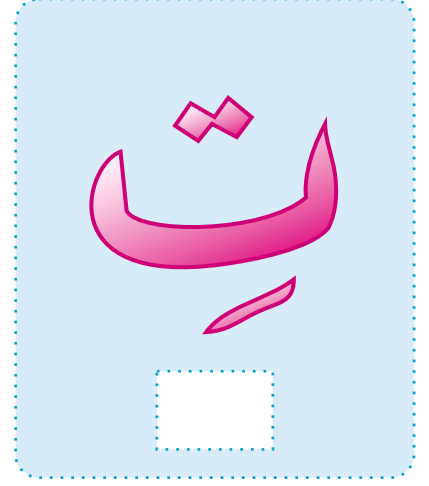
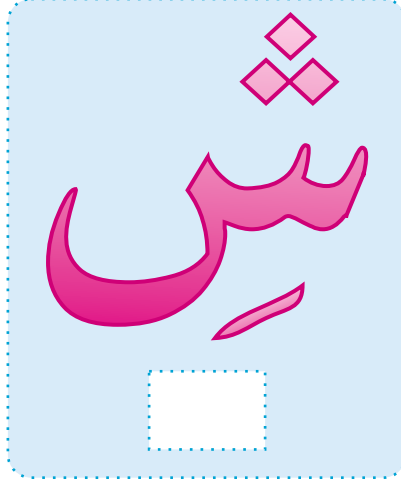
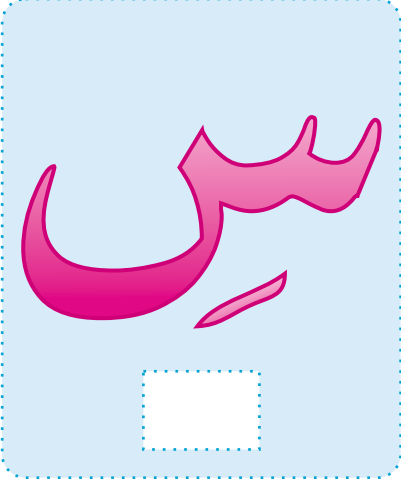
İşaretleme yaptıktan sonra esreli olan üç harfi de okumasını isteyin

"RI" sesiyle okunan esreli harfin altındaki kutucuğu (X) işareti ile işaretleyin.



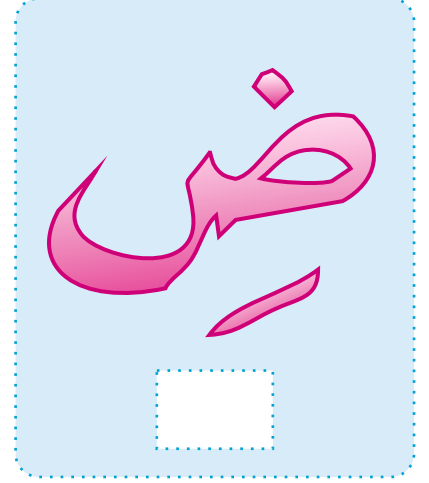
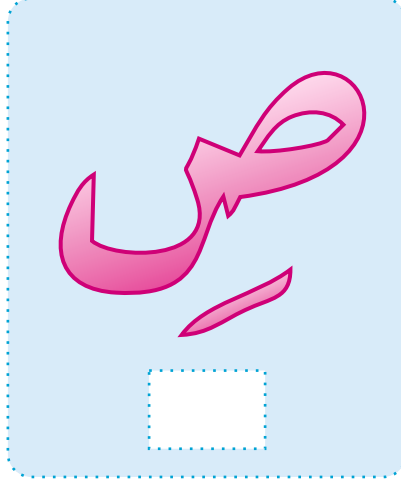
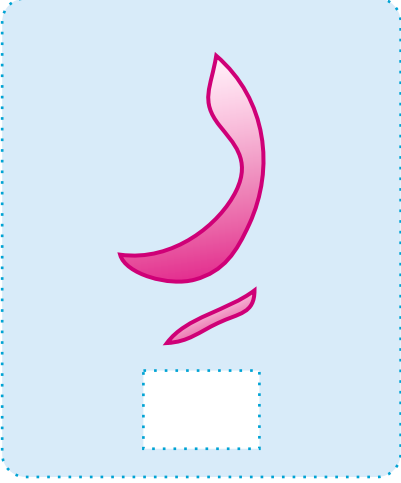
İşaretleme yaptıktan sonra esreli olan üç harfi de okumasını isteyin

"SI" sesiyle okunan esreli harfin altındaki kutucuğu (X) işareti ile işaretleyin.



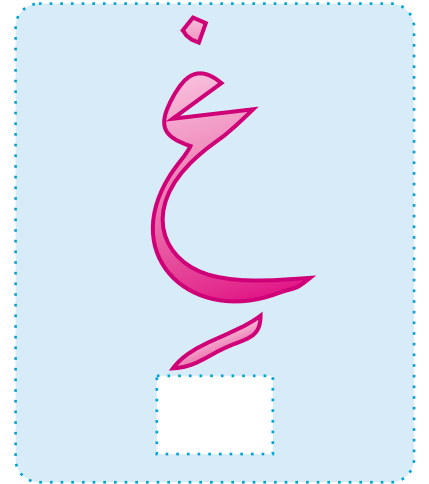
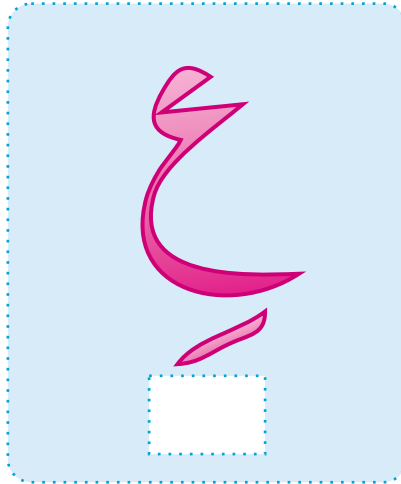
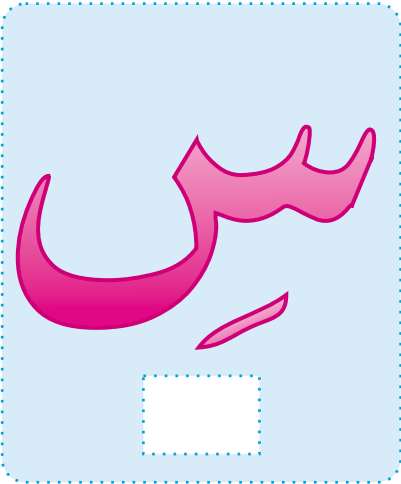
İşaretleme yapıldıktan sonra esreli olan üç harfi de okumasını isteyin

"SI" sesiyle okunan esreli harfin altındaki kutucuğu (X) işareti ile işaretleyin.



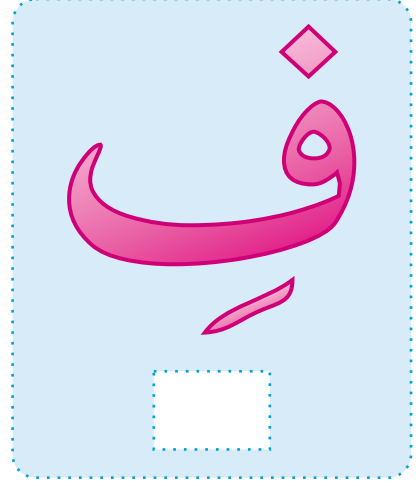
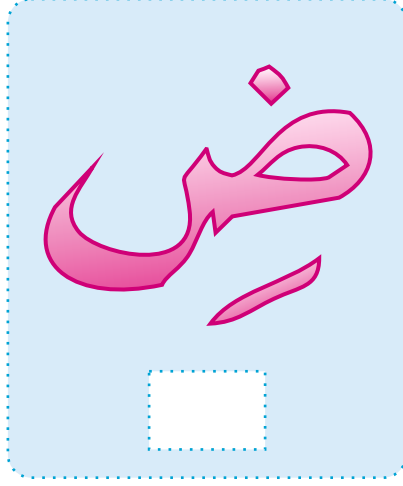
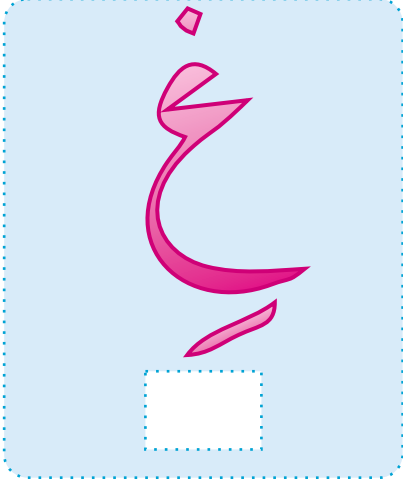
İşaretleme yapıldıktan sonra esreli olan üç harfi de okumasını isteyin

"I" sesiyle okunan esreli harfin altındaki kutucuğu (X) işareti ile işaretleyin.



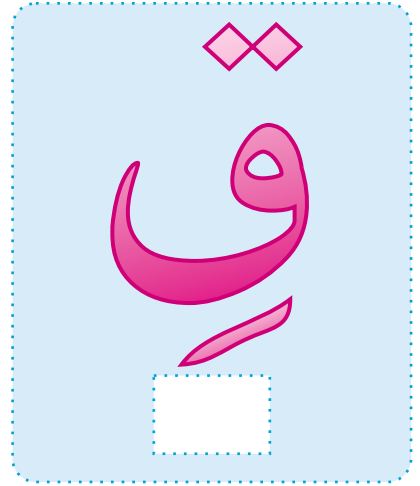
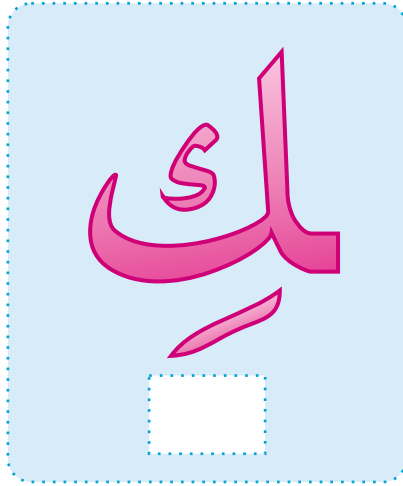
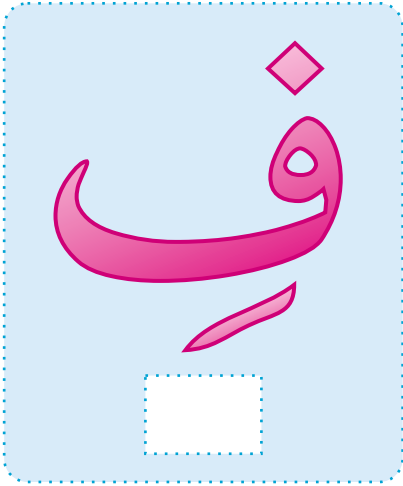
İşaretleme yapıldıktan sonra esreli olan üç harfi de okumasını isteyin

"F" sesiyle okunan esreli harfin altındaki kutucuğu (X) işareti ile işaretleyin.



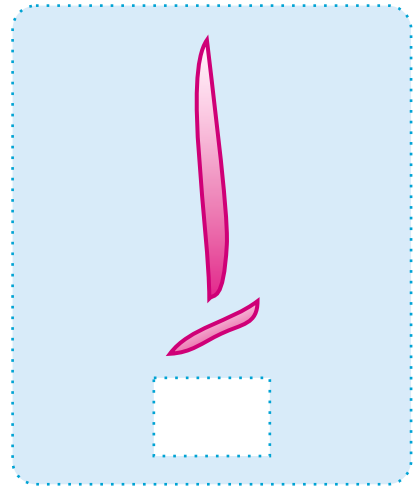
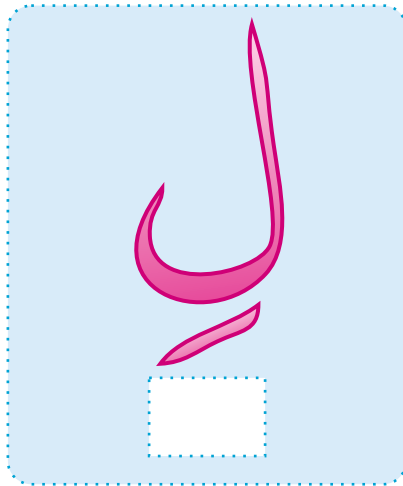
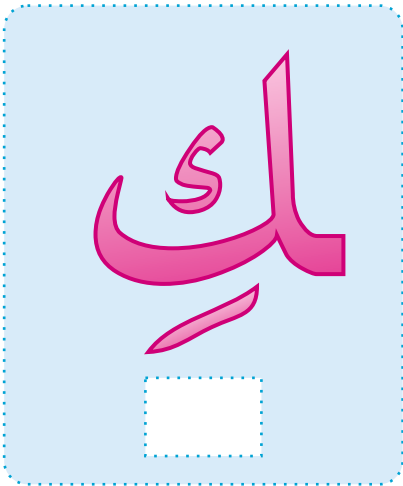
İşaretleme yaptıktan sonra esreli olan üç harfi de okumasını isteyin

"K" sesiyle okunan esreli harfin altındaki kutucuğu (X) işareti ile işaretleyin.



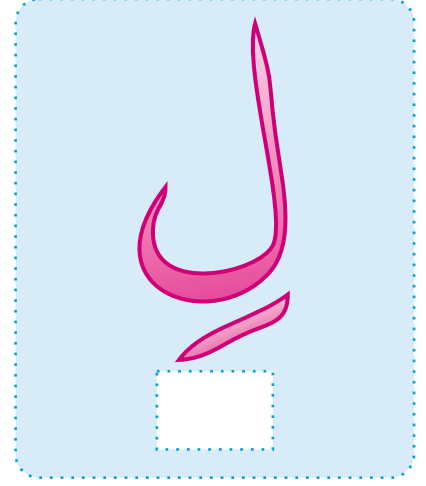
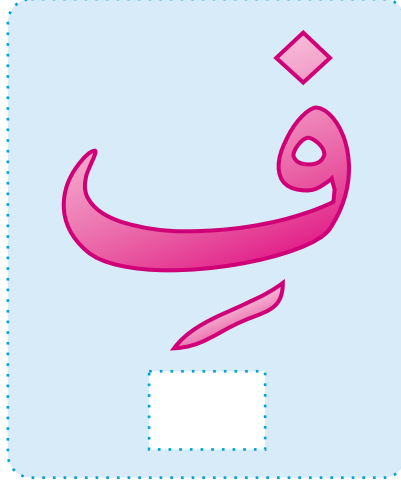
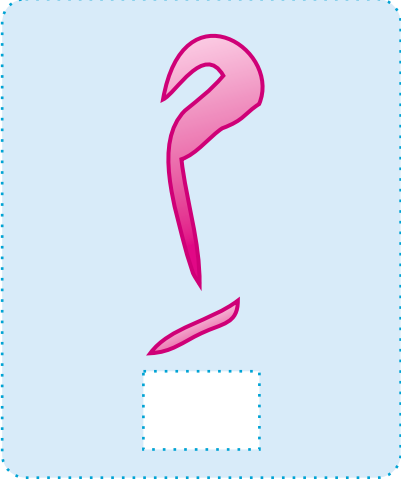
İşaretleme yaptıktan sonra esreli olan üç harfi de okumasını isteyin

"L" sesiyle okunan esreli harfin altındaki kutucuğu (X) işareti ile işaretleyin.



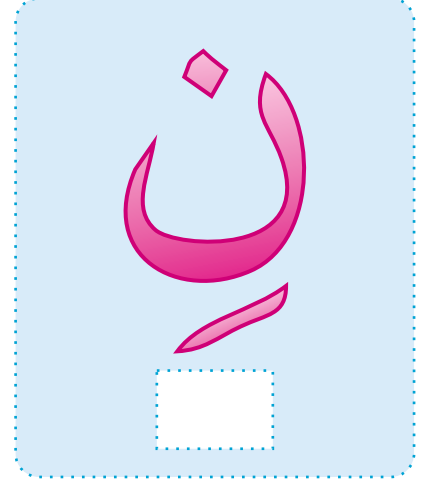
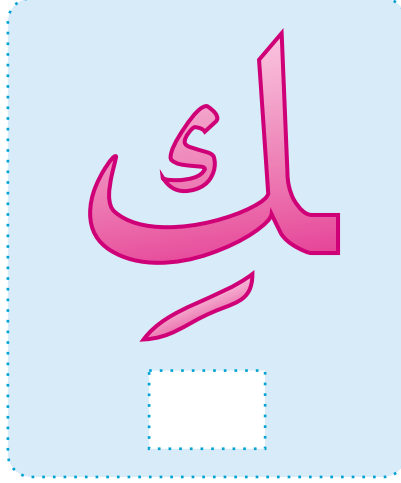
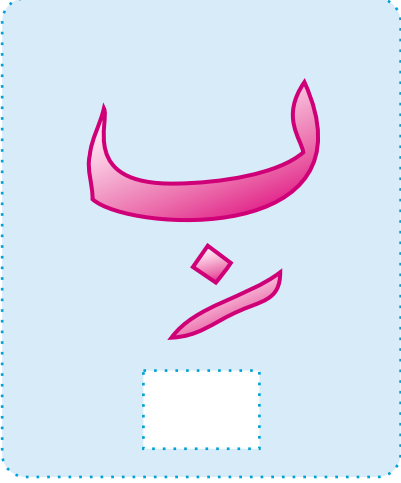
İşaretleme yaptıktan sonra esreli olan üç harfi de okumasını isteyin

"Mİ" sesiyle okunan esreli harfin altındaki kutucuğu (X) işareti ile işaretleyin.



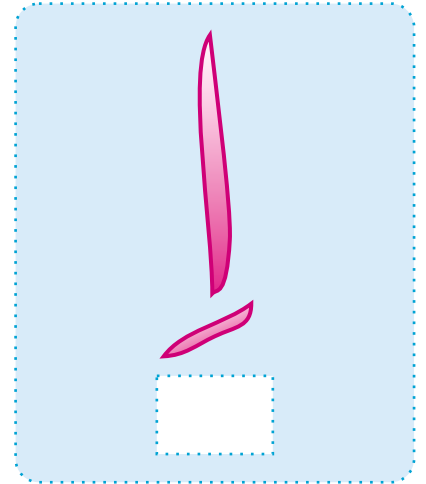
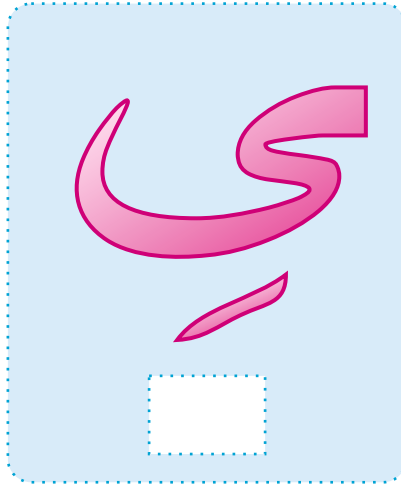
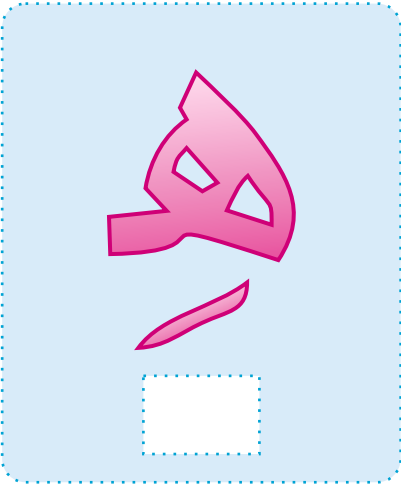
İşaretleme yaptıktan sonra esreli olan üç harfi de okumasını isteyin

"Nİ" sesiyle okunan esreli harfin altındaki kutucuğu (X) işareti ile işaretleyin.



İşaretleme yaptıktan sonra esreli olan üç harfi de okumasını isteyin

"Yİ" sesiyle okunan esreli harfin altındaki kutucuğu (X) işareti ile işaretleyin.



İşaretleme yaptıktan sonra esreli olan üç harfi de okumasını isteyin



اِثِدِ

اِثِ

اِبِ

بِحِثِ

قِثَبِ

رِزِقِ

فَضِغِ

اِلِكِ

ذِدَرِ

اَلِهِ

خَلِقِ

وِبِهِ

اَسْرِ

لِيسِ

وَمِنِ

كَمَالِ

قَالَتِ

كِتَابِ

اِمْنَتِ

حَوْلِكَ

رَحْمَةِ

وَحَدَتِكَ

كَمَثَلِهِ

صَحْبِهِ